



THE CHINA NAVIGATION CO. LTD.



M.S. KOKOPO CHIEF

981 TEU Geared Multi-Purpose Containership

BUILT

May 1991
Miho Zosen, Shimizu, Japan
Lengthened November 2005

PORT OF REGISTRY

Hong Kong

CLASS

Lloyds +100A1 LMC UMS Containership
(No. 2 & 3 holds hold suitable for general cargo)
IMO No. 8907412
Off. No. HK- 0018

DIMENSIONS

Length O.A. : 158.055m
Length B.P. : 148.305m
Breadth Mld. : 22.00m
Depth Mld. : 11.00m
Summer draft : 7.981m
Summer Dwt. : 13387.20mt
GRT : 10352.00
NRT : 5804.00
GRT Suez : 10,837.54
Panama :
NRT Suez : 8,774.96
Panama : 9,305.0

CALL SIGN

VRRD

COMMUNICATIONS

Satcom Fleet 77 : No. 764588828, 764588829, (Tel)
Fax : No. 764588831, (Fax)
Satcom mini M : No. 763630344, (Tel)
Satcom C : No. 447706210/211
Email : kokopochief@cnco.amosconnect.com

CONTAINER CAPACITY DETAILS

No.'s 1 and 4 holds are fully cellular, with cellguides for 20' I.S.O. containers. There are 210 reefer points on deck.

Cargo holds 1 & 2 certified for the carriage of IMDG Class 1.4(S), 2.1, 2.2, 2.3, 3.1, 3.2, 3.3, 4.1, 4.2, 4.3, 5.1, 6.1(A), 6.1(B), 6.1(C), 6.1(D), 8(A), 8(B), 8(C) & 9. These holds fitted with forced fan ventilation (2 air changes per hour).

Cargo holds 3 & 4 certified for the carriage of IMDG Class 1.4(S), 2.2, 3.3, 4.1, 4.2, 4.3, 5.1, 8(A), & 8(D)

Nos. 2 & 3 holds are multi-purpose spaces without cellguides but each hold has 8 off-side folding flush fitting tweendecks. Container stowage baseplates are provided on the tanktops and tweendecks. Removable beams and pillars, 2 sets are provided athwartships to support the tweendecks.

	20ft	40ft
Capacity Hold	378 TEU	94 FEU + 190 TEU
Deck	603 TEU	270 FEU + 63 TEU
Total	981 TEU	364 FEU + 251 TEU

TEU capacity with homogenous load - 12T 14T 16T

IMO criteria and approved dep. cond. 98% Bunkers & arr. cond. 15% Bunkers 740 699 655

HATCH COVERS AND DECK STRENGTHS

Holds No. 1 & 4 – 12 off, 20ft wide single-skin, McGregor pontoon covers, each 20' bay has dedicated lids, No. 2 & 3 cargo space weather deck hatch covers are of pontoon type, each hold consist of 2 panels each side (P& S) with swing seal joint on ships center line. No. 2 & 3 Hold 'Tween Deck hatch consist of 4 side-folding single skin covers port and starboard hydraulically operated. All lids are non-sequential opening and stacking. Heaviest lid weight 31 mt.

Stackweights:

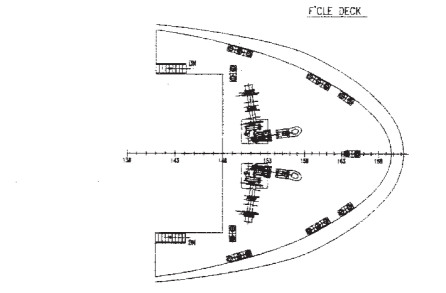
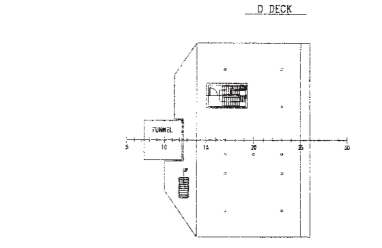
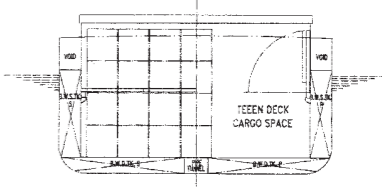
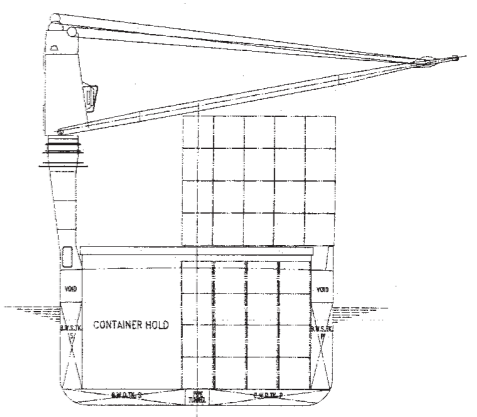
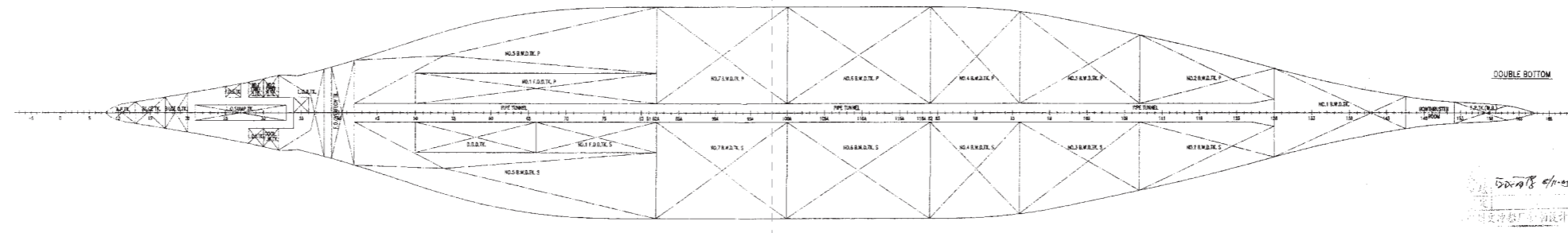
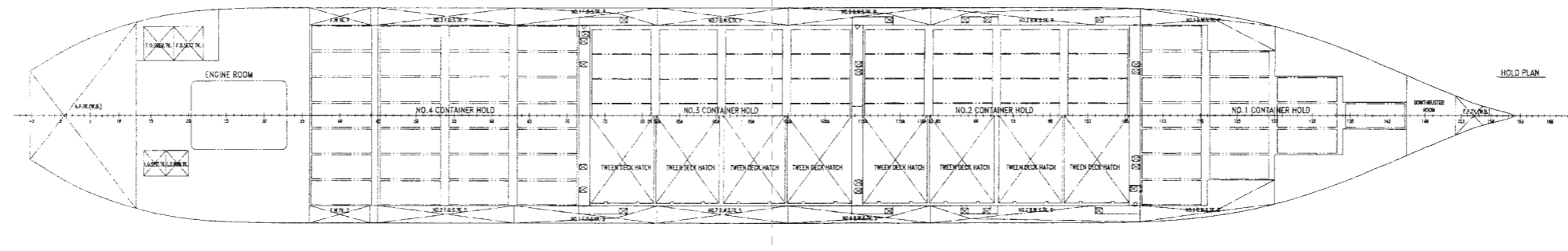
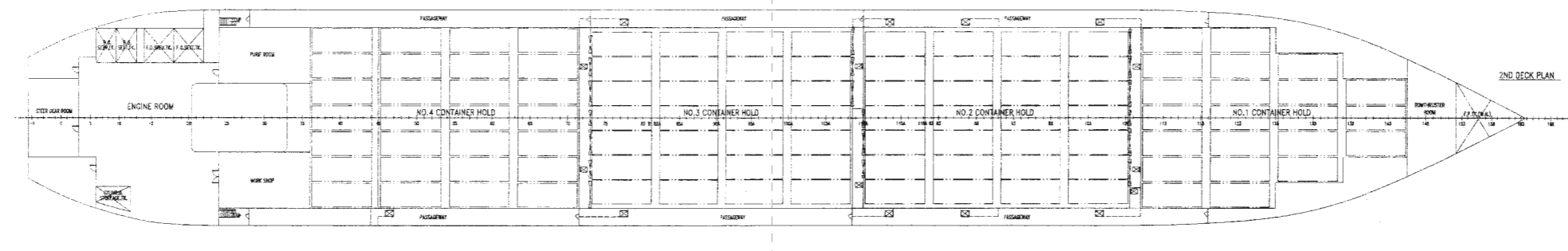
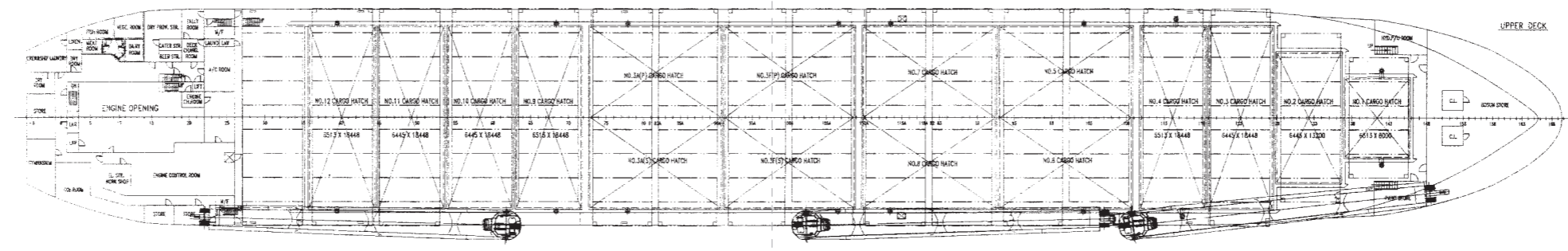
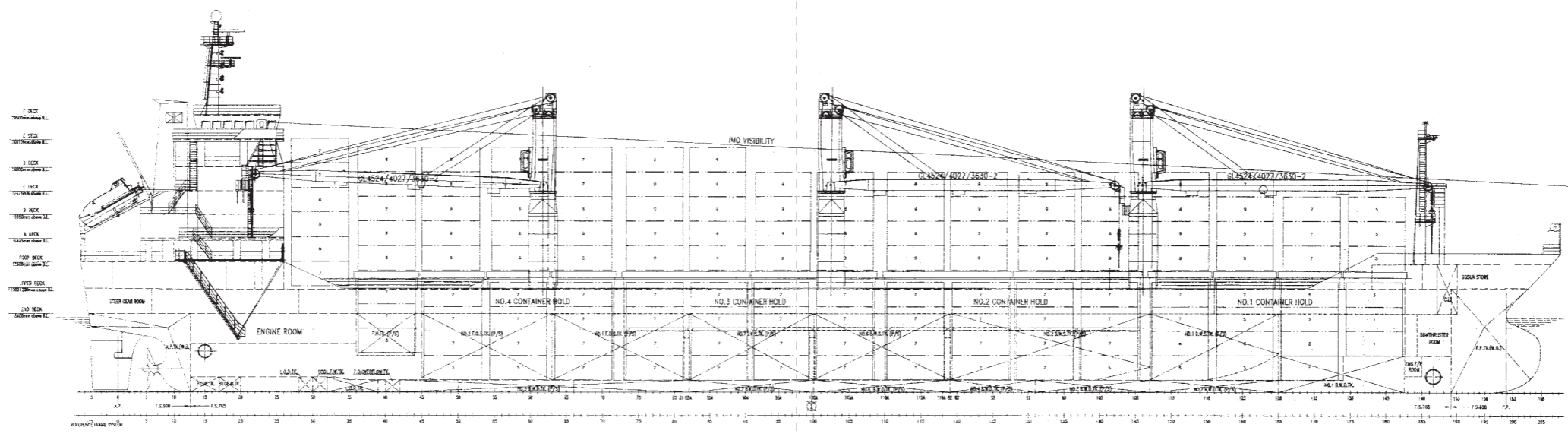
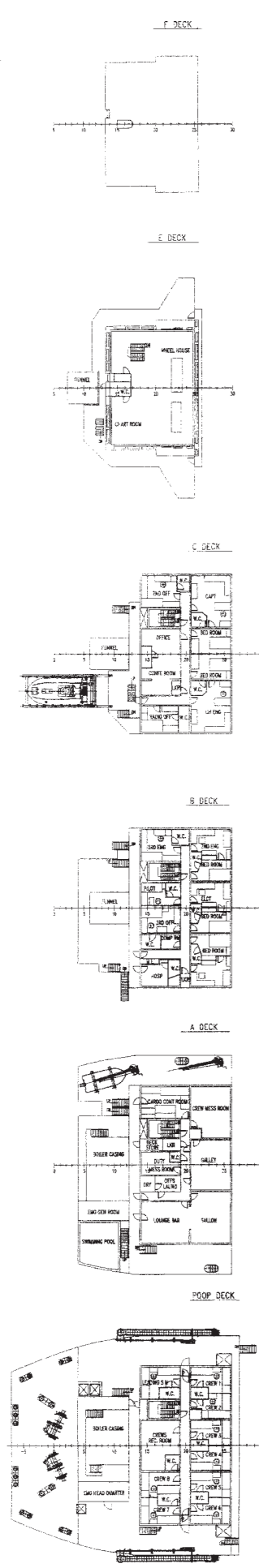
Hatchcovers :	No. 1 & 4 holds	
Container Load	TEU (90mt)	
	FEU (90mt)	
Uniform Load	1.75 mt/sq.m.	
'Tweendeck :	No. 2 & 3 holds	
Container Load	TEU (40mt)	
	FEU (60mt)	
Uniform Load	3.7 mt/sq.m.	
Tanktop:	No. 1 & 4 hold	No. 2 & 3 hold
Container Load	TEU (120mt)	TEU (120mt)
		FEU (150mt)
Uniform Load	9.5 mt/sq.m.	13.5 mt/sq.m.



M.S. KOKOPO CHIEF

981 TEU Geared Multi-Purpose Containership

SC4351C-100-04



PRINCIPAL PARTICULARS

LENGTH (O.A.)	158.055 m
LENGTH (P.P.)	148.305 m
BREADTH (MLD)	22.00 m
DEPTH (MLD)	11.00 m
SUMMER DRAFT EXTREME (INCLUDING 16mm KEEL)	7.981 m
DEADWEIGHT (AT SUMMER DRAFT)	abt. 13,387.20 mt
CONTAINER IN TAKE	IN HOLD 378 TEU
	ON DECK 603 TEU
	TOTAL 981 TEU
MAIN ENGINE	MAN B&W 7L42MC 8,120 ps
COMPLEMENT	19 Persons
CLASSIFICATION	LR + 100A1, + LMC, UMS, "CONTAINER VESSEL"
	NO. 2, 3 HOLDS ARE SUITABLE FOR GENERAL CARGOES

DESIGNED BY	杨军	GENERAL ARRANGEMENT PLAN	SC4351C-100-04
CHECKED BY	杨军	总布置图	SCALE: 1:200
APPROVED BY	万水生	KOKOPO CHIEF	SHANGHAI MERCHANT SHIP DESIGN & RESEARCH INSTITUTE
DATE	2017-2008		上海船舶研究设计院

13550DWT MPC VESSEL LENGTHENING DESIGN 舾装设计

500018 4/1-01

此图及其中所包含的信息为SMDR的专有财产，且不得复制或再行分发。未经SMDR书面许可，任何人不得复制或再行分发。

比例尺: 1:200

